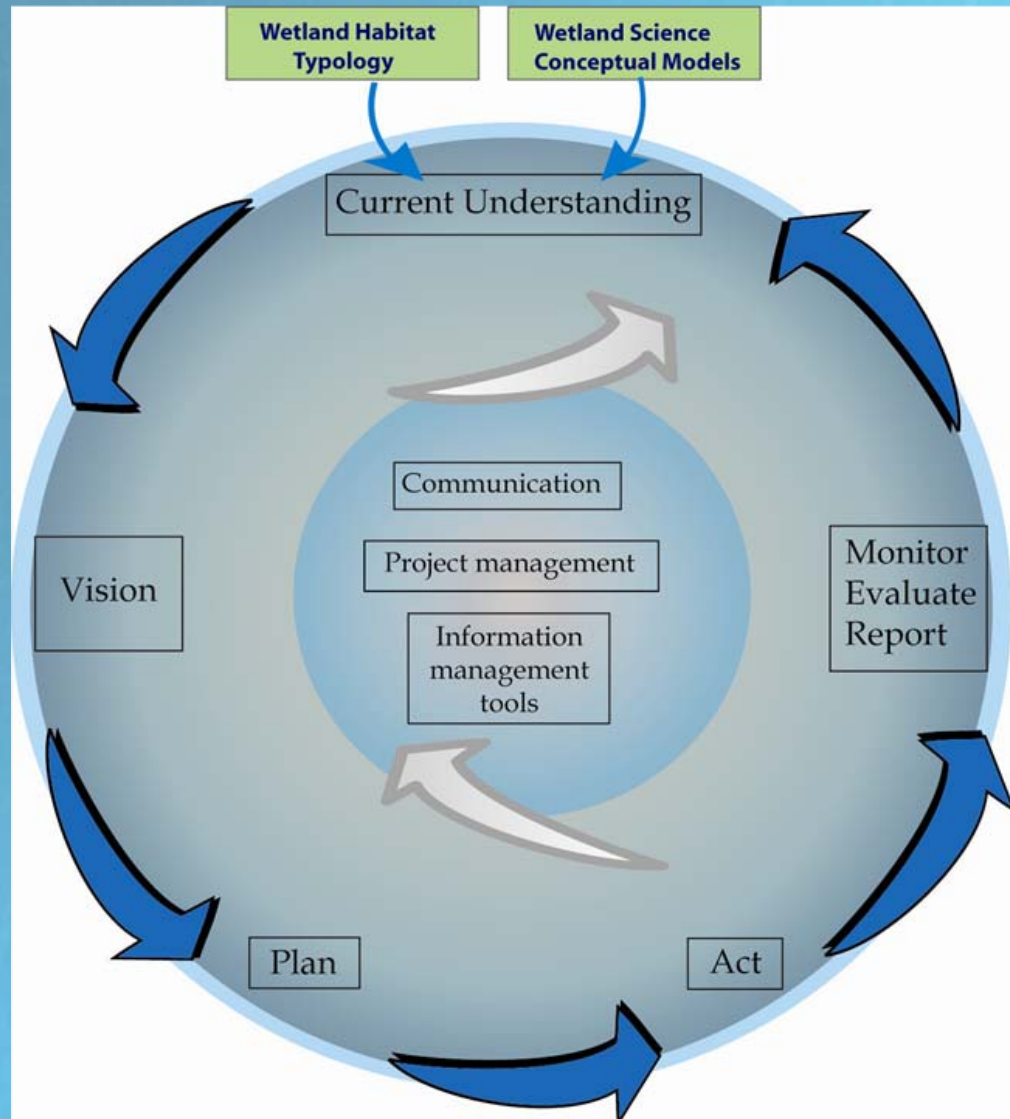


Adaptive Management Framework





Wetlands Include:

- Rivers and Creeks;
 - Estuaries;
 - Artificial Wetlands e.g. Dams;
 - Springs;
 - Lakes, lagoons, billabongs;
 - Swamps; and
 - Bays and Marine Areas.
- NOT FLOODPLAINS!!!**



Mapping

Managing Wetlands

Riverine Currently in development

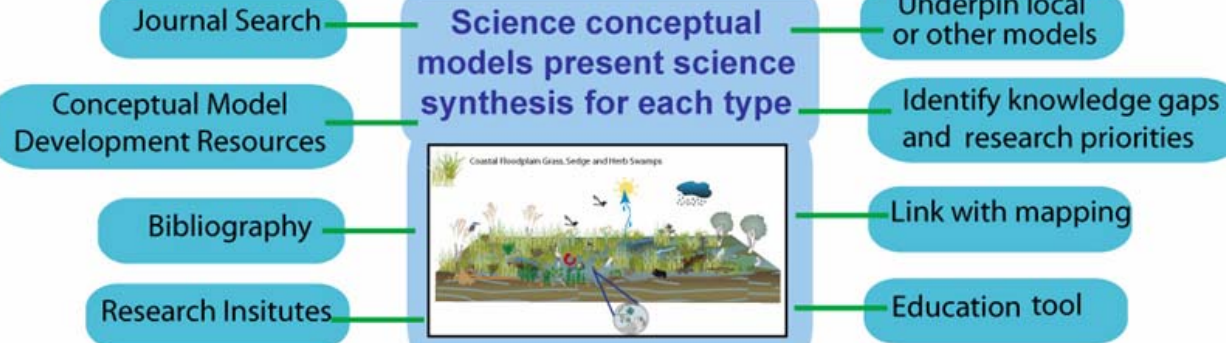
Lacustrine

Palustrine

Estuarine Partially complete

Marine To come

Typology identifies and describes wetland habitat types



Stressor Models use science to identify indicators



FARWH



Wetlands Condition

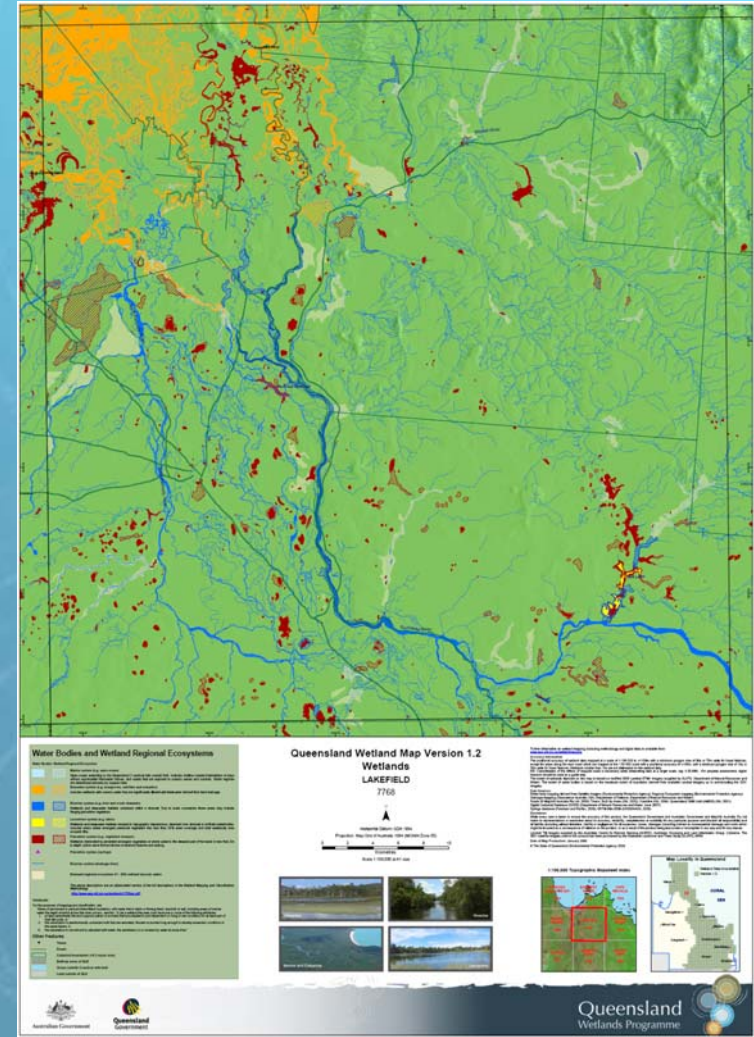
Typology

Conceptual Models –
(Processes/ Components)

Conceptual Models -
(Pressure, Condition)

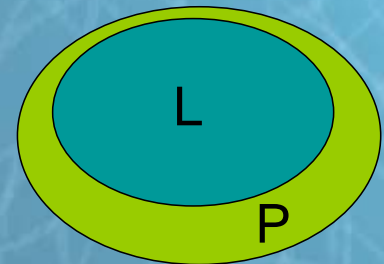
Wetland Habitat Mapping and Typology

- Wetlands Description Tool – list of wetland attributes
- Must be able to be applied at a STATE scale
- Queensland Mapping Programme – mapped attributes
- GIS software can classify all mapped wetlands in the state using nationally workshopped attributes from the Wetlands Description Tool



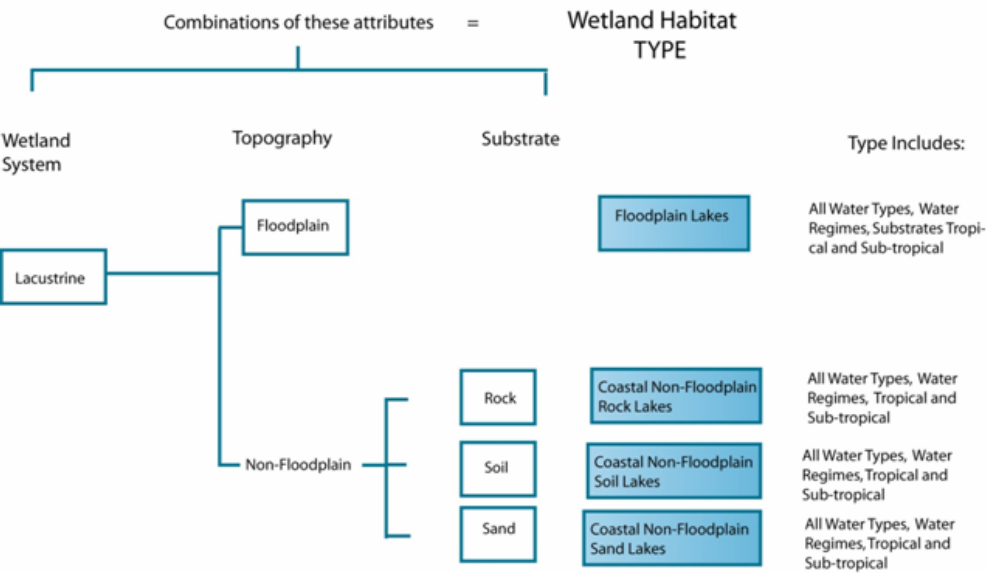
Wetlands **Habitat** Typology Attributes

- **Wetland System** – Lacustrine (lake) / Palustrine (swamp)
- **Climate regions** – Coastal and Sub-Coastal/ Arid and Semi Arid
- **Water Type** – Fresh/ Salt
- **Water Regime** – Commonly wet/ Periodically inundated
- **Substrate** – Peat/ Soil/ Rock/ Sand
- **Topography** – Floodplain/ Non-floodplain
- **Vegetation** – Tree/ Heath/ Grass, Sedge, Herb

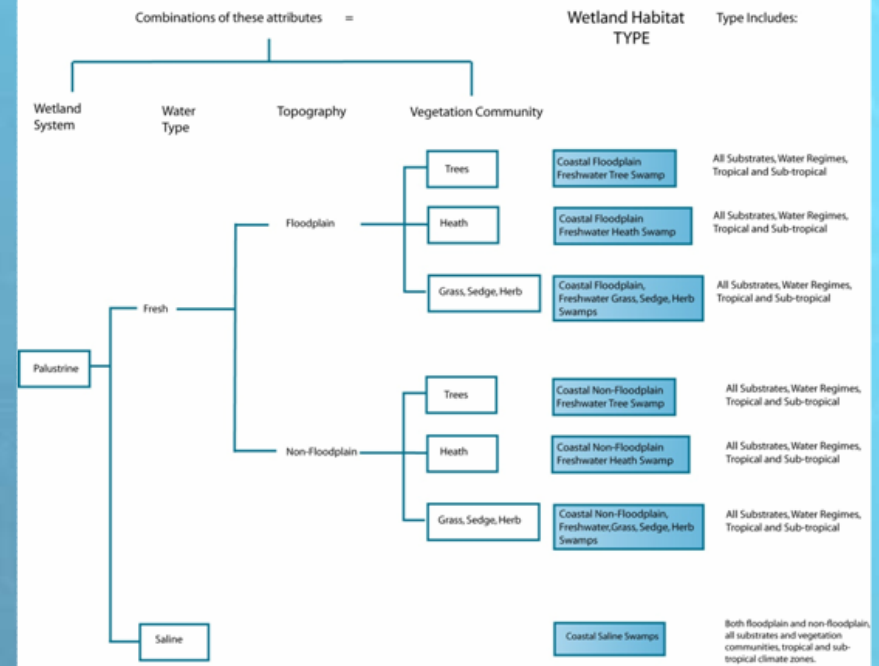


Wetland Habitat Type Flow Charts

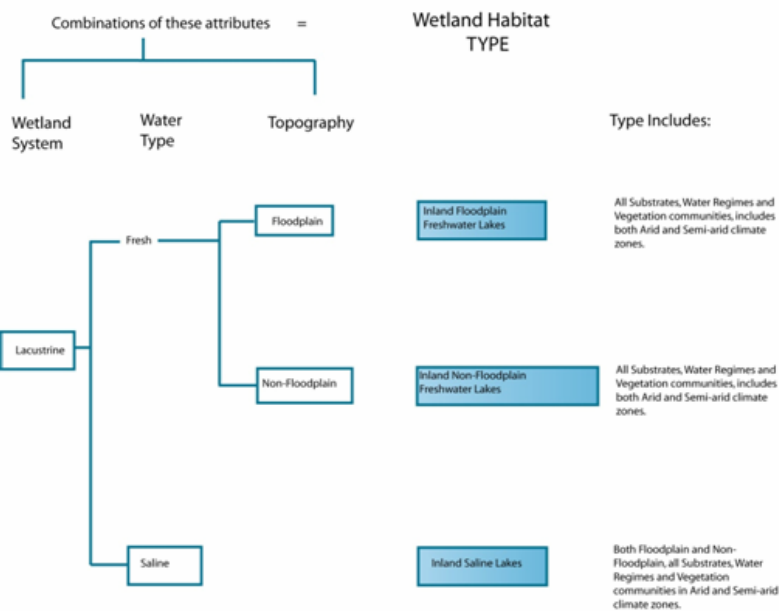
Coastal and Sub-Coastal Lakes



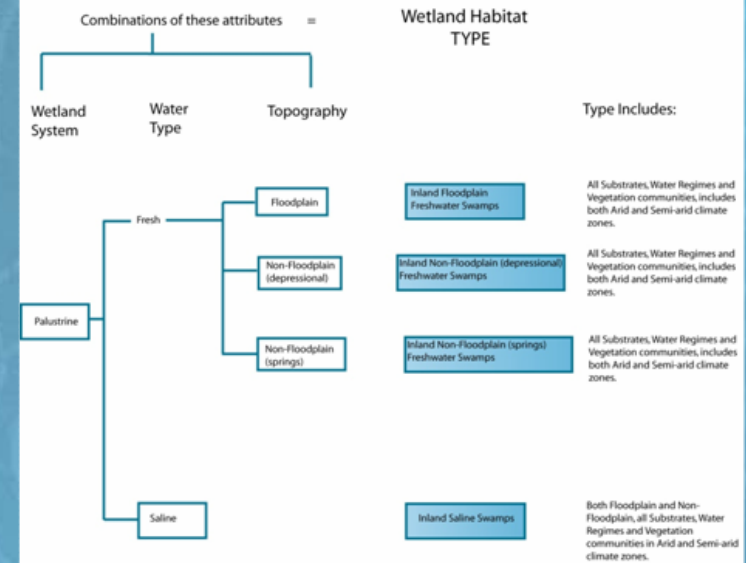
Coastal and Sub-Coastal Swamps



Arid and Semi-Arid Lakes



Arid and Semi-Arid Swamps



Wetland Habitat Types

Equatorial, Tropical and Sub-Tropical

Palustrine

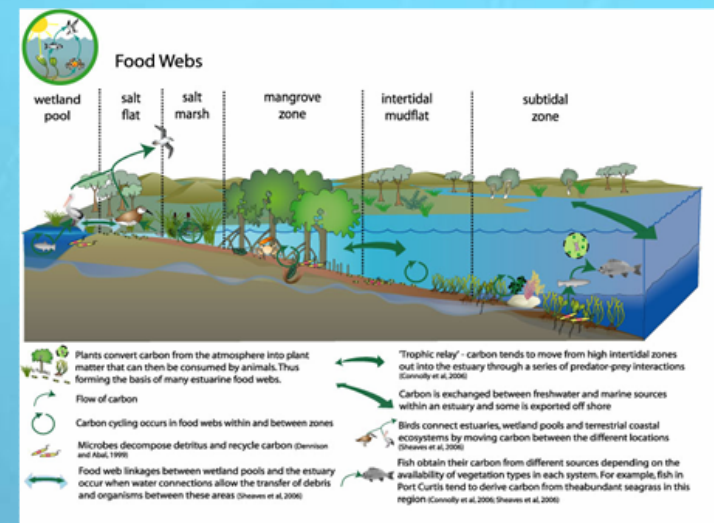
- [Floodplain Grass, Sedge, Herb Swamps](#)
- [Floodplain Tree Swamps](#) – Melaleuca and Eucalypt
- [Floodplain Heath Swamps](#)
- [Saline Swamps](#)
- Non-Floodplain Grass, Sedge, Herb Swamps
- Non-Floodplain Tree Swamps – Melaleuca and Eucalypt
- Tree Swamp - Palm
- Non-Floodplain Heath Swamps (Wet Heath)

Lacustrine

- [Floodplain Lakes](#)
- Non-Floodplain Lakes – Rock
- Non-Floodplain Lakes – Soil
- Non-Floodplain Lakes – Sand Window
- Non-Floodplain Lakes – Sand Perched

[Next](#)

What are conceptual models?



- Simplified representations of the real world
- Convey large amount of complex information in a synthesised and concise way as text and diagrams\
- Diagrams - use symbols to represent, describe and convey information about components and processes of the system