

Product Disclaimer:

Please be aware that in some Quickbird images, an artefact known as Circuit Boarding exists which can result in a loss of pixel value information. Circuit Boarding is the direct result of on-board compression on the sensor CCD arrays and occurs primarily in areas of very high or low reflectance with low spectral variation (sand, shaded regions, deep water features etc.).

Please refer to Example 1 (below) - The region left of the red cross-hairs clearly demonstrates this linear effect.

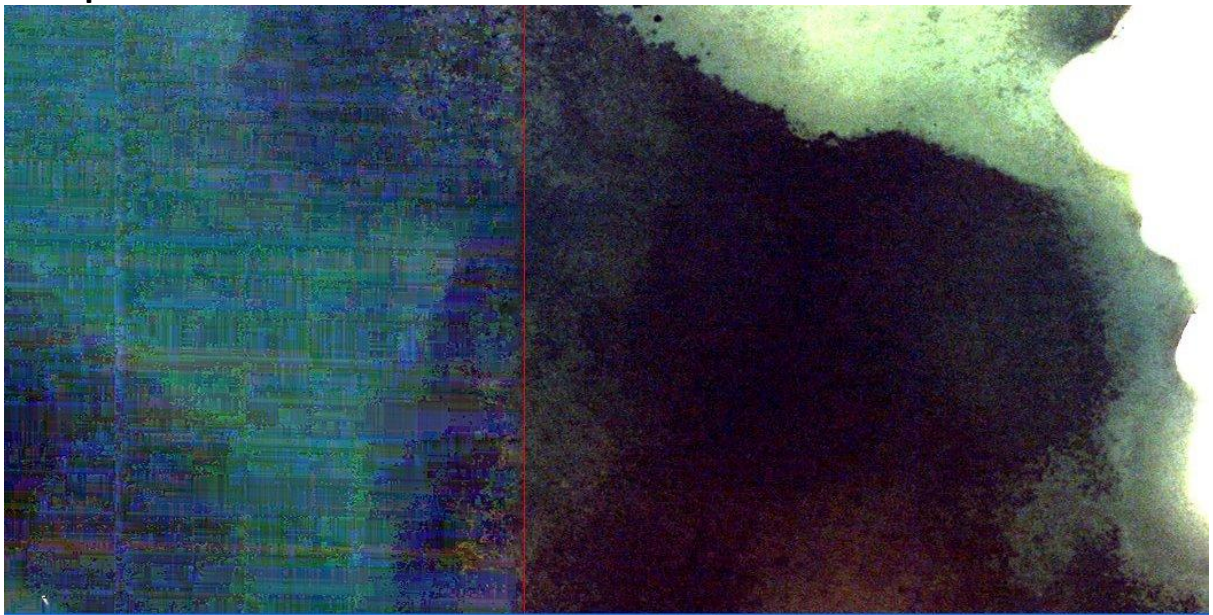
It is recommended that all users consider and account for this artefact (where present) when developing an image processing (atmospheric correction, feature classification etc.) methodology as it may affect the results or quality of your output product.

For more information, please contact:

Dr Arnold G. Dekker
Inland & Coastal Water Remote Sensing
CSIRO Land & Water, Canberra GPO Box 1666, ACT 2601, Australia

Tel +61-2-62465821
Fax +61-2-62465988
Mob +61-(0)419411338

Example 1:



Horizontal Profile

